

balmforth

Estate & Letting Agents



28 Cambridge Way

Haverhill, CB9 9HL

Asking Price £220,000



28 Cambridge Way

Haverhill, CB9 9HL

Asking Price £220,000



Entrance hall

Generous entrance hall with oak effect laminate flooring leading to

Two piece white suite with separate shower cubicle.
Frosted aspect to rear garden

Lounge

13'9" x 12'2" (4.2 x 3.72)

Generous lounge with gas fire and mantle. Carpeted and large aspect to front

Kitchen

12'1" x 8'7" (3.7 x 2.63)

Large kitchen with room for small dining table. Range of wall and base units in shaker style, occasional glazed cupboard. Option for white goods to be included. Back door access to garden.

Cloak room

6'1" x 6'0" (1.86 x 1.85)

Wall mounted basin and WC. Aspect to garden

Main bedroom

11'11" x 10'11" (3.65 x 3.35)

Large main bedroom with walk in wardrobe and aspect to rear garden

Bedroom 2

10'11" x 10'7" (3.33 x 3.24)

Generous second bedroom with large walk in wardrobe and airing cupboard. Aspect to front

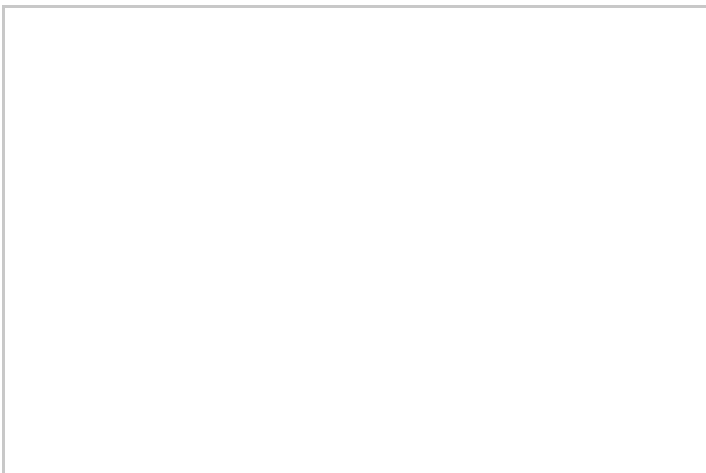
Bedroom 3

7'7" x 6'10" (2.32 x 2.10)

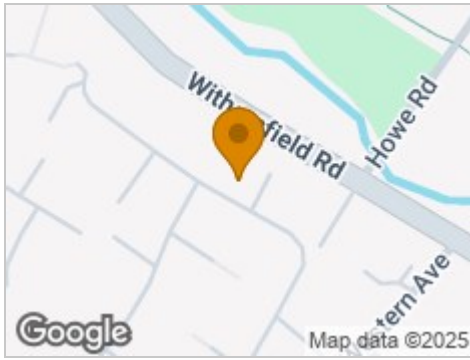
Third smaller single room/dressing area. Aspect to front

Family bathroom

6'4" x 6'1" (1.94 x 1.87)



Road Map



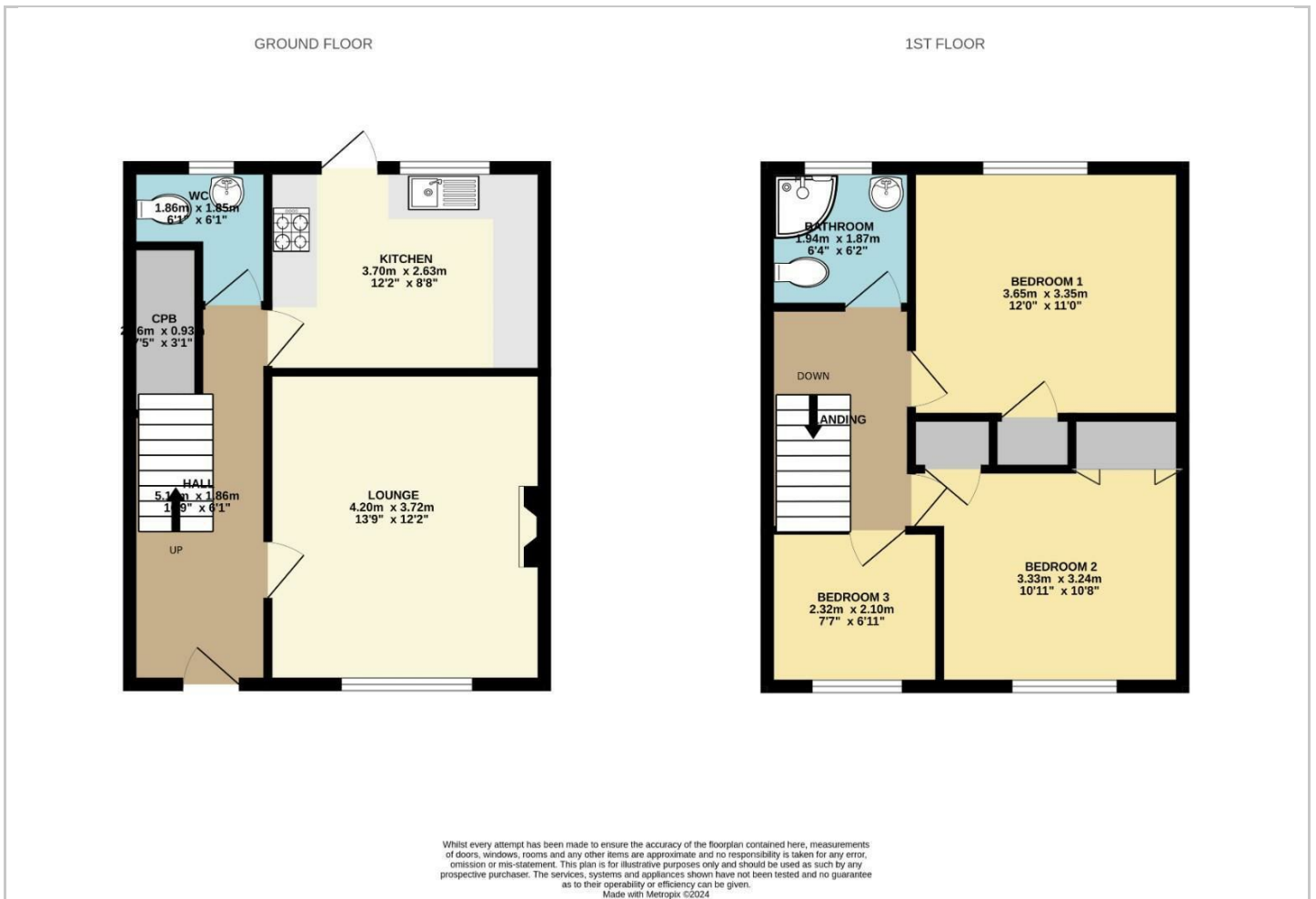
Hybrid Map



Terrain Map



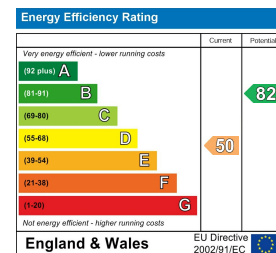
Floor Plan



Viewing

Please contact our office on 01440 707976 if you wish to arrange a viewing appointment for this property or require further information.

Energy Efficiency Graph



These particulars, whilst believed to be accurate are set out as a general outline only for guidance and do not constitute any part of an offer or contract. Intending purchasers should not rely on them as statements of representation of fact, but must satisfy themselves by inspection or otherwise as to their accuracy. No person in this firm's employment has the authority to make or give any representation or warranty in respect of the property.